



kaleidescape™

Quick Reference Guide

Scripting Tips

QRG-002 Rev. 2.0

Overview

You can customize your viewing experience and create a dramatic theatrical event with the innovative scripting capability of your Kaleidescape System. You can create your own scripts that play a sequence of content, such as custom introductions and favorite scenes, before your feature presentation. This Quick Reference Guide explains how to create a sample script that includes a movie trivia sequence, two favorite scenes, a Kaleidescape Custom Introduction, and your feature presentation.

This tutorial assumes that you have already created and named at least two of your favorite scenes. You can create favorite scenes from the Kaleidescape interface while you play a movie or import them from another Kaleidescape System. You can name new favorite scenes from the Movie Details box or in the User Web Utility.

To create this sample script, you will:

- ▶ Open the User Web Utility
- ▶ Name the new script
- ▶ Add a movie trivia segment
- ▶ Add favorite scenes
- ▶ Add a custom introduction
- ▶ Add the feature presentation
- ▶ Review and play the script

Opening the User Web Utility

To create a script you must have a computer with a Web browser connected to the same subnet (switch) as the Kaleidescape Server. To create scripts for your system you must open the User Web Utility in your Web browser.

To open the User Web Utility:

1. Open a Web browser and enter one of these URLs to access the User Web Utility:

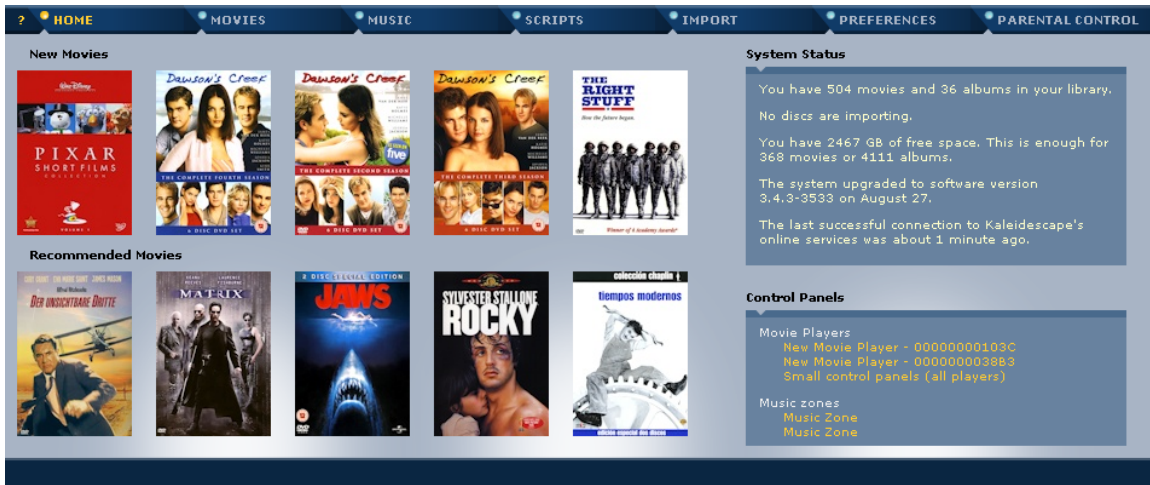
Windows users

Enter **http://my-kaleidescape** or **http://ks-000000000000** where you have replaced the zeros with the serial number of your Kaleidescape Server. The Server serial number is located on the back of the Server and on the front, behind the front bezel.

Mac OS X users

Enter **http://my-kaleidescape.local** or **http://ks-000000000000.local** where you have replaced the zeros with the serial number of your Kaleidescape Server. The Server serial number is located on the back of the Server and on the front, behind the front bezel.

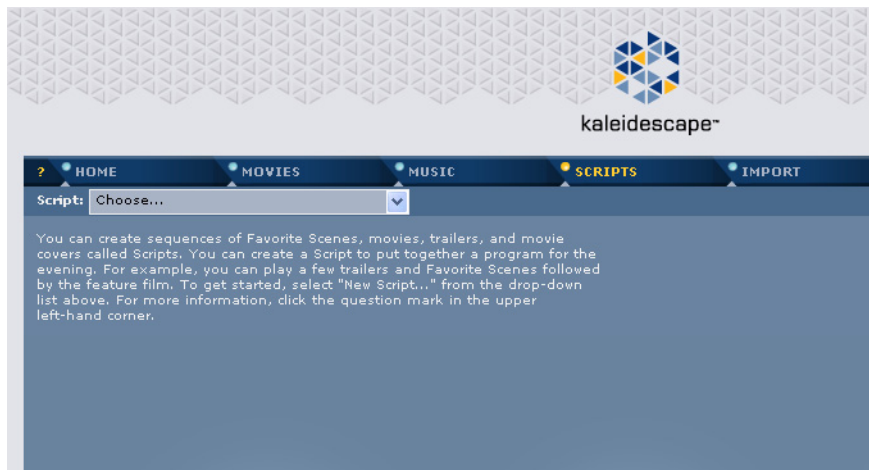
- If a login page appears, enter the user password and click Login. The User Web Utility's HOME page appears, which displays basic information about the Kaleidescape System and your collections.



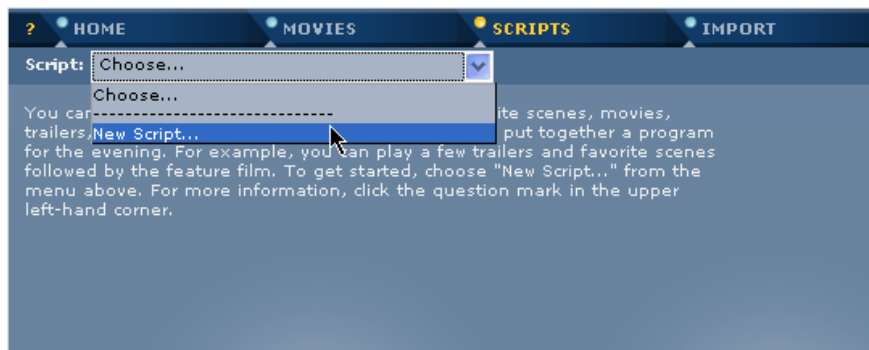
- Bookmark the Home page (add it to your favorites folder) so that you can return quickly to the User Web Utility in the future.

Name the New Script

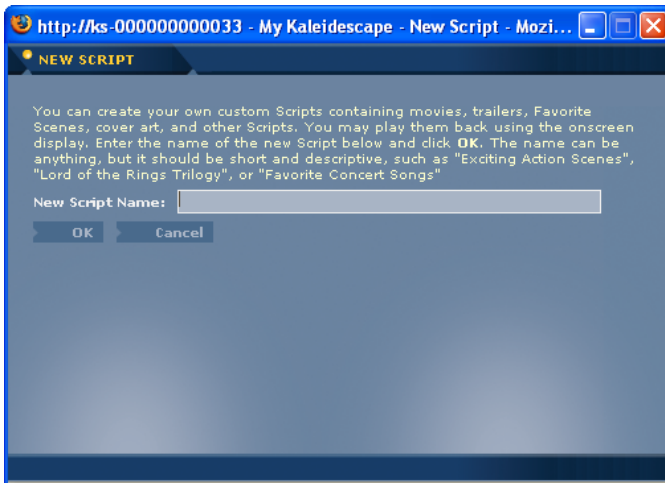
- Click the SCRIPTS tab.



- From the Script: drop-down menu, select New Script.... The New Script dialog box appears.

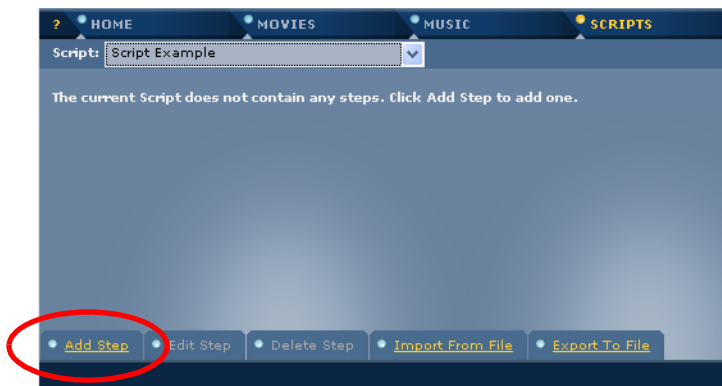


3. Enter a name for your script in the New Script Name: text box and click OK.

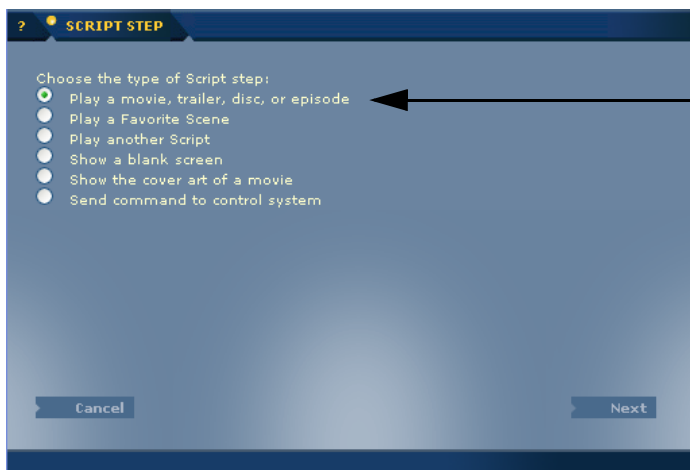


Add Movie Trivia

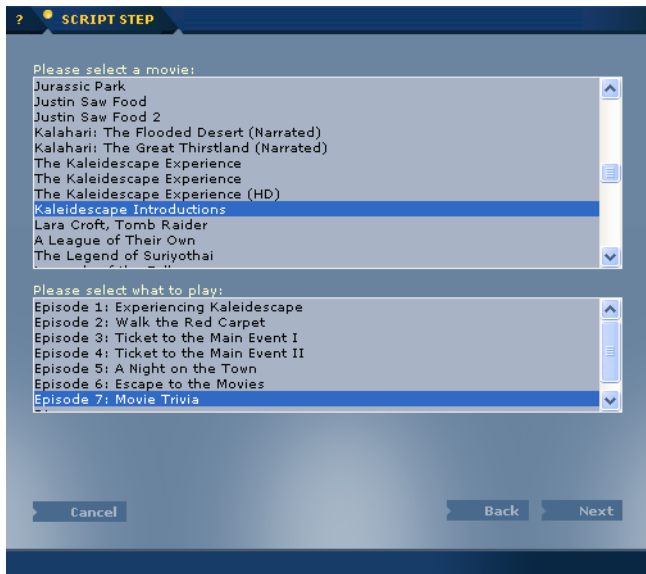
1. Click Add Step from the SCRIPTS tab. The Script Step wizard guides you through a series of dialog boxes that allow you to choose which introduction, favorite scenes, and movie(s) you would like to include in your script.



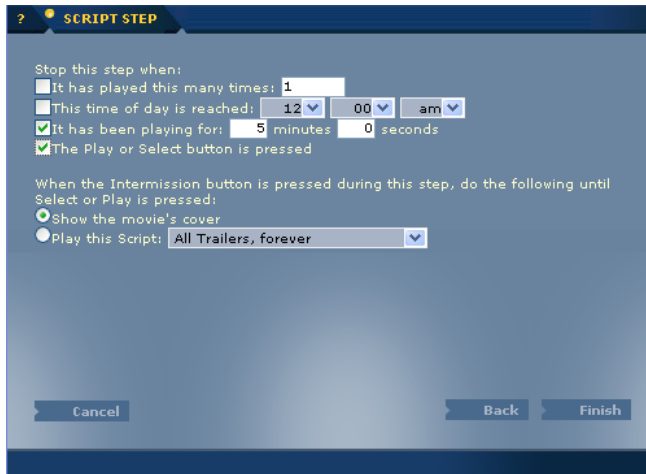
2. Select Play a movie, trailer, disc, or episode and click Next.



3. In the Please select a movie: box, select Kaleidescape Introductions.
4. In the Please select what to play: box, select Episode 7: Movie Trivia.

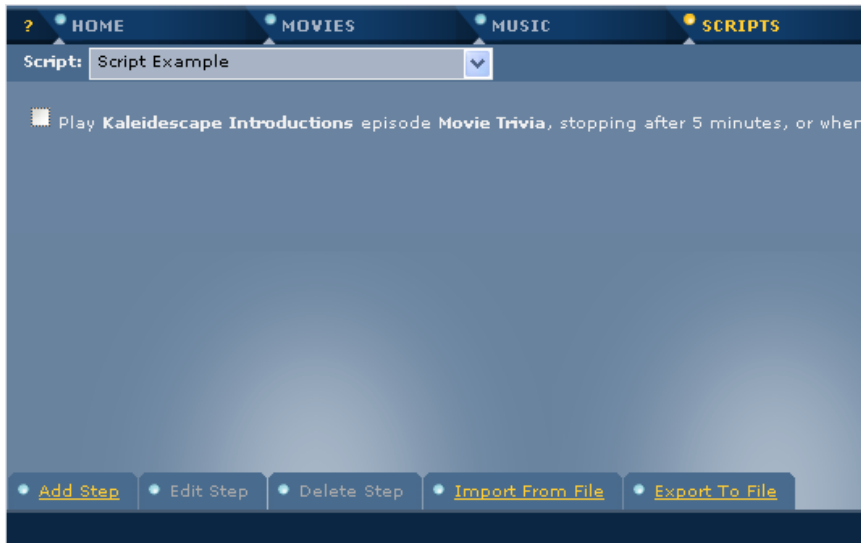


5. Click Next. The next dialog box lets you choose how the step will end and what will happen when the Intermission button is pressed.



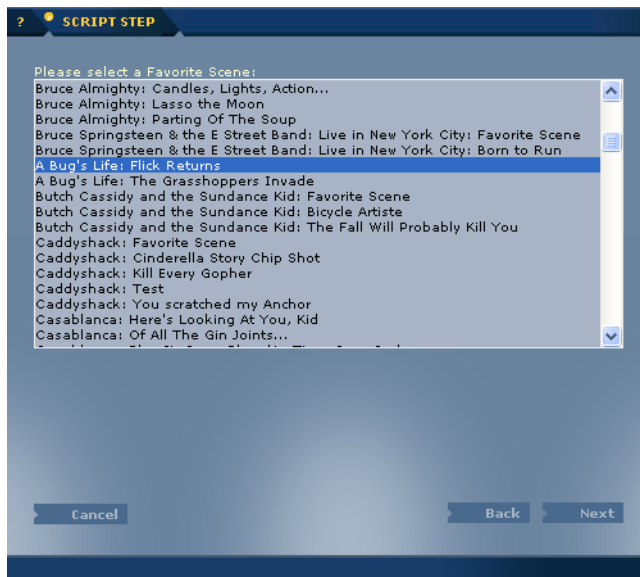
6. For this sample script, uncheck the default Stop this step when: It has played this many times [1].
7. Check Stop this step when: It has been playing for _ minutes _ seconds and enter 5 minutes 0 seconds. This limits the Movie Trivia playing time to five minutes.
8. Under Stop this step when:, check The Play or Select button is pressed.
9. Check Show the movie's cover when the Intermission button is pressed.

10. Click Finish. The SCRIPTS tab reappears with your new step.



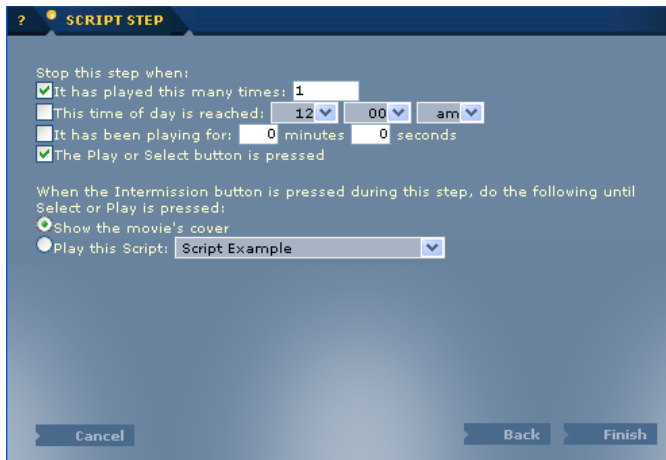
Add Favorite Scenes

1. Click Add Step from the SCRIPTS tab.
2. Click Play a Favorite Scene and click Next.



3. From the Please select a Favorite Scene: box, choose the first favorite scene you would like to show. You can only select one favorite scene at a time.
4. Click Next. The next dialog box lets you choose how the step will end and what will happen when the Intermission button is pressed.

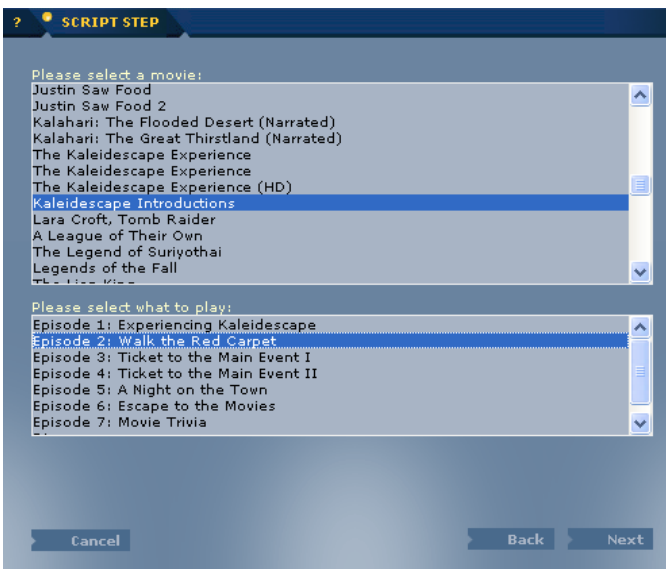
- Accept the defaults, Stop this step when: It has played this many times: [1] and Show the movie's cover when Intermission is pressed.



- Under Stop this step when:, check The Play or Select button is pressed to give you the option to skip this step during the script playback.
- Click Finish. The SCRIPTS tab reappears with your new step.
- Add more favorite scenes by repeating Step 1 through Step 7.

Add a Custom Introduction

- Click Add Step from the SCRIPTS tab.
- Select Play a movie, trailer, disc, or episode and click Next.
- Select Kaleidescape Introductions in the Please select a movie: box.



- In the Please select what to play: box, select the introduction you would like to play.
- Click Next and then Finish.

Add the Feature Presentation

1. Click Add Step from the SCRIPTS tab.
2. In the Please select a movie: box, select Play a movie, trailer, disc or episode and click Next. Choose your feature presentation.
3. Accept the Movie option (default) in the Please select what to play: box.
4. Click Next and then Finish.

Review and Play the Script

The SCRIPTS tab lists all the steps in the script you created, as shown in the example below.



Review your final script and decide if you would like to make any changes. If you want to change the order of the steps, simply click and drag the steps up or down. To edit a step, check the step and click **Edit Step** at the bottom of the tab. The script is saved automatically as you go. When you are finished, you can exit the User Web Utility by closing your browser.

To enjoy a movie night event with your script, go to the Collections page in the onscreen display. Select the Scripts tab and highlight the script you created. Press play when you are ready to begin your presentation.

Should you have any questions or issues, please contact Kaleidescape Customer Support for help at +1 (650) 625-6160.